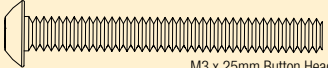
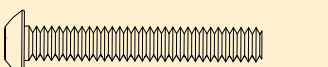
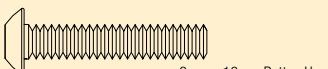
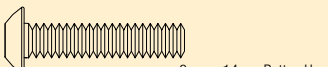
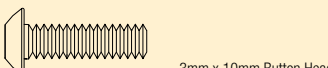




| | |
|--|---|
|  VTR235113 | x 10 M3 x 25mm Button Head Screw M3 x 25mm Halbrundsrauben Vis à tête bombée M3 x 25mm Viti testa tonda M3 x 25mm |
|  VTR235112 | x 10 M3 x 20mm Button Head Screw M3 x 20mm Halbrundsrauben Vis à tête bombée M3 x 20mm Viti testa tonda M3 x 20mm |
|  VTR235110 | x 10 3mm x 16mm Button Head Screw 3mm x 16mm Halbrundsrauben Vis à tête bombée 3mm x 16mm Viti testa tonda 3mm x 16mm |
|  VTR235109 | x 10 3mm x 14mm Button Head Screw 3mm x 14mm Halbrundsrauben Vis à tête bombée 3mm x 14mm Viti testa tonda 3mm x 14mm |
|  VTR235107 | x 10 3mm x 10mm Button Head Screw 3mm x 10mm Halbrundsrauben Vis à tête bombée 3mm x 10mm Viti testa tonda 3mm x 10mm |
|  VTR235106 | x 10 M3 x 8mm Button Head Screw M3 x 8mm Halbrundsrauben Vis à tête bombée M3 x 8mm Viti testa tonda M3 x 8mm |
|  VTR235105 | x 10 M3 x 6mm Button Head Screw M3 x 6mm Halbrundsrauben Vis à tête bombée M3 x 6mm Viti testa tonda M3 x 6mm |



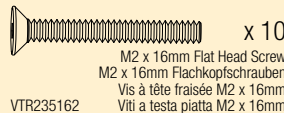
VTR235102

M2.5 x 20mm Button Head Screw
M2,5 x 20mm Halbrundschauben
Vis à tête bombée M2,5 x 20mm
Viti testa tonda M2,5 x 20mm



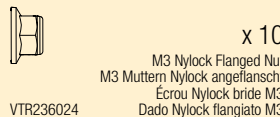
VTR235003

M2 x 6mm Cap Head Screw
M2 x 6mm Innensechskantschrauben
Vis à tête creuse M2 x 6mm
Viti a testa bombata M2 x 6mm



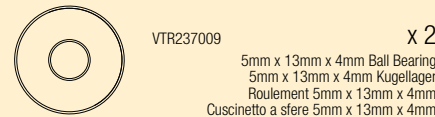
VTR235162

M2 x 16mm Flat Head Screw
M2 x 16mm Flachkopfschrauben
Vis à tête fraisée M2 x 16mm
Viti a testa piatta M2 x 16mm



VTR236024

M3 Nylock Flanged Nut
M3 Muttern Nylock angeflanscht
Écrou Nylock bride M3
Dado Nylock flangiato M3



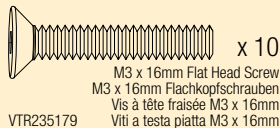
VTR237009

5mm x 13mm x 4mm Ball Bearing
5mm x 13mm x 4mm Kugellager
Roulement 5mm x 13mm x 4mm
Cuscinetto a sfere 5mm x 13mm x 4mm



VTR235101

M2.5 x 16mm Button Head Screw
M2,5 x 16mm Halbrundschauben
Vis à tête bombée M2,5 x 16mm
Viti testa tonda M2,5 x 16mm



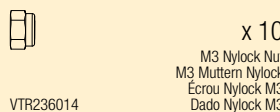
VTR235179

M3 x 16mm Flat Head Screw
M3 x 16mm Flachkopfschrauben
Vis à tête fraisée M3 x 16mm
Viti a testa piatta M3 x 16mm



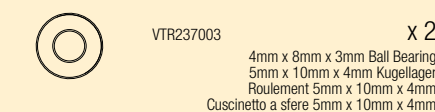
VTR235160

M2 x 10mm Flat Head Screw
M2 x 10mm Flachkopfschrauben
Vis à tête fraisée M2 x 10mm
Viti a testa piatta M2 x 10mm



VTR236014

M3 Nylock Nut
M3 Muttern Nylock
Écrou Nylock M3
Dado Nylock M3



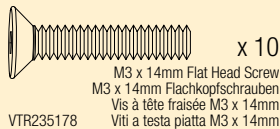
VTR237003

4mm x 8mm x 3mm Ball Bearing
5mm x 10mm x 4mm Kugellager
Roulement 5mm x 10mm x 4mm
Cuscinetto a sfere 5mm x 10mm x 4mm



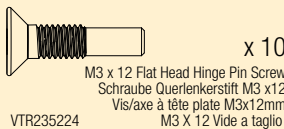
VTR235098

M2.5 x 8mm Button Head Screw
M2,5 x 8mm Halbrundschauben
Vis à tête bombée M2,5 x 8mm
Viti testa tonda M2,5 x 8mm



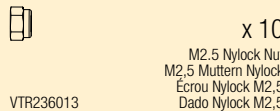
VTR235178

M3 x 14mm Flat Head Screw
M3 x 14mm Flachkopfschrauben
Vis à tête fraisée M3 x 14mm
Viti a testa piatta M3 x 14mm



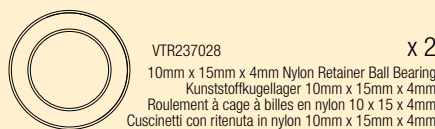
VTR235224

M3 x 12 Flat Head Hinge Pin Screw
Schraube Querlenkerstift M3 x12
Vis/axe à tête plate M3x12mm
M3 X 12 Vide a taglio



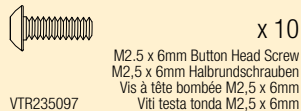
VTR236013

M2.5 Nylock Nut
M2,5 Muttern Nylock
Écrou Nylock M2,5
Dado Nylock M2,5



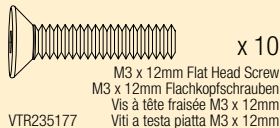
VTR237028

10mm x 15mm x 4mm Nylon Retainer Ball Bearing
Kunststoffkugellager 10mm x 15mm x 4mm
Roulement à cage à billes en nylon 10 x 15 x 4mm
Cuscinetti con ritenuta in nylon 10mm x 15mm x 4mm



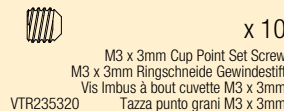
VTR235097

M2.5 x 6mm Button Head Screw
M2,5 x 6mm Halbrundschauben
Vis à tête bombée M2,5 x 6mm
Viti testa tonda M2,5 x 6mm



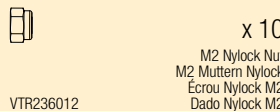
VTR235177

M3 x 12mm Flat Head Screw
M3 x 12mm Flachkopfschrauben
Vis à tête fraisée M3 x 12mm
Viti a testa piatta M3 x 12mm



VTR235320

M3 x 3mm Cup Point Set Screw
M3 x 3mm Ringschneide Gewindestift
Vis Imbus à bout cuvette M3 x 3mm
Tazza punto grani M3 x 3mm



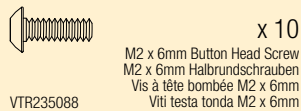
VTR236012

M2 Nylock Nut
M2 Muttern Nylock
Écrou Nylock M2
Dado Nylock M2



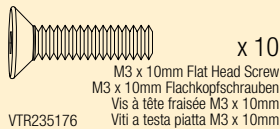
VTR237028

10mm x 15mm x 4mm Flanged Ball Bearing
10mm x 15mm x 4mm Bundlager
Roulement bride 10 x 15 x 4mm
Cuscinetti flangiato 10mm x 15mm x 4mm



VTR235088

M2 x 6mm Button Head Screw
M2 x 6mm Halbrundschauben
Vis à tête bombée M2 x 6mm
Viti testa tonda M2 x 6mm



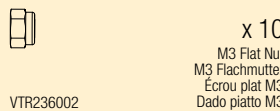
VTR235176

M3 x 10mm Flat Head Screw
M3 x 10mm Flachkopfschrauben
Vis à tête fraisée M3 x 10mm
Viti a testa piatta M3 x 10mm



VTR236131

3mm E-Clip
3mm E-Clip
E-Clip 3mm
E-Clip 3mm



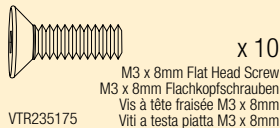
VTR236002

M3 Flat Nut
M3 Flachmutter
Écrou plat M3
Dado piatto M3



VTR235006

M2 x 12mm Cap Head Screw
M2 x 12mm Innensechskantschrauben
Vis à tête creuse M2 x 12mm
Viti a testa bombata M2 x 12mm



VTR235175

M3 x 8mm Flat Head Screw
M3 x 8mm Flachkopfschrauben
Vis à tête fraisée M3 x 8mm
Viti a testa piatta M3 x 8mm



VTR236076

3.2mm x 7mm x .5mm Washer
3,2mm x 7mm x ,5mm Unterlegscheiben
Rondelle 3,2mm x 7mm x ,5mm
Rondella 3,2mm x 7mm x ,5mm



VTR237004

5mm x 10mm x 4mm Ball Bearing
5mm x 10mm x 4mm Kugellager
Roulement 5mm x 10mm x 4mm
Cuscinetto a sfere 5mm x 10mm x 4mm



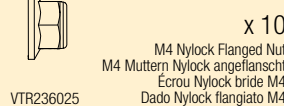
VTR235008

M2 x 16mm Cap Head Screw
M2 x 6mm Innensechskantschrauben
Vis à tête creuse M2 x 20mm
Viti a testa bombata M2 x 6mm



VTR235009

M2 x 20mm Flat Head Screw
M2 x 20mm Flachkopfschrauben
Vis à tête fraisée M2 x 20mm
Viti a testa piatta M2 x 20mm



VTR236025

M4 Nylock Flanged Nut
M4 Muttern Nylock angeflanscht
Écrou Nylock bride M4
Dado Nylock flangiato M4



VTR237007

5mm x 11mm x 4mm Ball Bearing
5mm x 11mm x 4mm Kugellager
Roulement 5mm x 11mm x 4mm
Cuscinetto a sfere 5mm x 11mm x 4mm

REPLACEMENT PARTS // ERSATZTEILE // PIÈCES DE RECHANGE // PEZZI DI RICAMBIO //

| Part # Nummer Numéro Codice | Description | Beschreibung | Description | Descrizione |
|------------------------------------|---|---|--|---|
| DYN4114 | 10W Li-Po AC Balance Charger | Dynamite 10W LiPo Balance Ladegerät | Chargeur AC équilibreur Li-Po 10W | Caricatore Li-Po AC 10W con bilanciamento |
| DYN1172 | Dynamite 15-Turn Brushed Motor | Dynamite 15 Turn Bürstenmotor | Moteur Dynamite 15T à balais | Motore Dynamite 15-Spire Brushed |
| DYN4927WP | Li-Po Tazer 12T Waterproof ESC | Dynamite LiPo Tazer 12 T Spritzwassergeschützter Regler | Variateur Tazer 12T Li-Po étanche | ESC Li-Po Tazer 12T Impermeabile |
| DYN1476 | Dynamite 7.4v 2000mAh 2S 30C Li-Po Long | Dynamite 7.4v 2000mAh 2S 30C Li-Po Lang | Batterie Li-Po Dynamite 2S 7.4V 2000mA 30C | Batteria Li-Po Dynamite 7.4v 2000mAh 2S 30C lunga |
| SPMSR300WP | Waterproof Surface Receiver | Spektrum Spritzwassergeschützter Surface Empfänger | Récepteur étanche | Ricevitore impermeabile |
| SPM3160 | DX3E DSM 3-Channel Surface Radio | DX3E DSM 3 Kanal Surface Sender | Emetteur DX3E 3 voies | Radio DX3E DSM 3-Channel per auto |
| VTR11000 | 903WP Digital Servo | Vaterra 903WP Digital Servo | Servo digital 903WP | 903WP servo digitale |
| VTR13003 | 625WP Metal Gear Servo WP | Vaterra Servo Metallgetriebe 625WP | Servo 625WP à pignons métal | 625WP Servo ingran. metallo |

TIRE & WHEEL // REIFEN UND RAD // PNEU AVEC JANTE // GOMME E CERCHI //

| Part # Nummer Numéro Codice | Description | Beschreibung | Description | Descrizione |
|------------------------------------|-------------------------------------|---|--------------------------------------|--------------------------------------|
| VTR43000 | Beadlock Wheel with Rings (2) | Vaterra Beadlockfelgen und Ringe (2) | Jantes Beadlock avec anneaux (2) | Ruote Beadlock con anelli (2) |
| VTR43001 | 1.9" Race Claw Tire with Insert (2) | Vaterra 1.9" Race Claw Reifen inkl. Einlage (2) | Pneus Race Claw 1.9 avec inserts (2) | Gomme 1.9" Race Claw con inserti (2) |



FRONT/REAR DIFFERENTIAL // FRONT/HECK DIFFERENTIAL // DIFFÉRENTIEL AVANT/ARRIÈRE // DIFFERENZIALE ANTERIORE/POSTERIORE

| Part # Nummer Numéro Codice | Description | Beschreibung | Description | Descrizione |
|------------------------------------|-------------------------|--|--|--------------------------------|
| VTR232005 | Front Outdrives (2) | Vaterra Antriebsklauen Vorne (2) | Noix de cardan avant (2) | Trascinatori anteriori (2) |
| VTR232015 | Fr/R Diff Housing | Vaterra Diffgehäuse Vorne/Hinten | Carter de différentiel av/arr | Sede diff. anter./poster |
| VTR232016 | Fr/R Ring & Pinion Gear | Vaterra Tellerrad und Triebbling Vorne/Hinten | Couronne et pignon d'attaque de différentiel av/arr | Anello e pignone anter./poster |
| VTR232019 | Front Diff Rebuild Kit | Vaterra Reparaturset Diff Vorne | Kit de réparation du différentiel avant | Kit diff. anter. ricostruito |



DRIVESHAFT // WELLEN // CARDAN // TRASMISSIONE //////////////////////////////////////

| Part # Nummer Numéro Codice | Description | Beschreibung | Description | Descrizione |
|------------------------------------|---|--------------------------------|---|--|
| VTR232011 | Front Center CV Driveshaft | Vaterra CV Wellen Set Mitte | Cardan CVD central avant | Trasmissione CV centrale anter. |
| VTR232013 | Drive Shaft Yoke, Cup & Hardware (1) | Vaterra Antriebswellenjoch (1) | Coupelle de cardan avec croisillon et visserie | Forcella, coppa e viteria semiasse (1) |
| VTR232021 | Molded Drive Shaft | Vaterra Antriebswelle | Cardan moulé | Albero di trasmissione stampato |



FRONT/REAR LOCKER // VORNE/HINTEN DIFFSPERRE // CALE DE VERROUILLAGE AVANT/ARRIÈRE // ////////////////////////////////////// BLOCCAGGIO ANTERIORI/POSTERIORI

| Part # Nummer Numéro Codice | Description | Beschreibung | Description | Descrizione |
|------------------------------------|------------------------------|---|---|----------------------------------|
| VTR232000 | Transmission Molded Gear Set | Vaterra Getriebesatz | Set de pignons transmission moulés | Set ingranaggi trasmissione |
| VTR232001 | Transmission Case | Vaterra Getriebegehäuse | Boîtier de transmission | Scatola trasmissione |
| VTR232005 | Front Outdrives (2) | Vaterra Antriebsklauen Vorne (2) | Noix de cardan avant (2) | Trascinatori anteriori (2) |
| VTR232014 | Locker, Rear Diff | Vaterra Diffsperr Hinten | Cale de verrouillage de différentiel arrière | Bloccaggio differenziale poster. |
| VTR232015 | Fr/R Diff Housing | Vaterra Diffgehäuse Vorne/Hinten | Carter de différentiel av/arr | Sede diff. anter./poster |
| VTR232016 | Fr/R Ring & Pinion Gear | Vaterra Tellerrad und Triebbling Vorne/Hinten | Couronne et pignon d'attaque de différentiel av/arr | Anello e pignone anter./poster. |
| VTR332000 | Locker, Front Diff | Vaterra Diffsperr Vorne | Cale de verrouillage de différentiel avant | Bloccaggio differenziale anter. |



SHOCKS // STOSSDÄMPFER // AMORTISSEUR // AMMORTIZZATORI //////////////////////////////////////

| Part # Nummer Numéro Codice | Description | Beschreibung | Description | Descrizione |
|------------------------------------|---|--|---|-------------------------------------|
| VTR232020 | Spring Cup & Retainer | Vaterra Zentrierring und Federdruckplatte | Coupelle d'amortisseur avec fixation | Molla coppa e fermo |
| VTR233000 | Shock Collar, Cap & Bushing | Vaterra Klemmring Kappe und Buchsen | Bague avec bouchon et palier d'amortisseur | Collare, tappo e boccola ammortizz. |
| VTR233001 | Front Shock Body (2) | Vaterra Dämpfergehäuse Vorne (2) | Corps d'amortisseurs avant (2) | Corpo ammortizz. anteriore (2) |
| VTR233002 | Shock Ends and Cups (4) | Vaterra Dämpferkappen und Kugelpfannen | Chapes et coupelles d'amortisseurs (4) | Terminali e coppe ammortizz. (4) |
| VTR233003 | Shock Cartridge | Vaterra Dämpferendkappe | Cartouche d'amortisseurs | Cartuccia ammortizz. |
| VTR233004 | Shock Piston Set | Vaterra Kolbenplatte | Set de pistons d'amortisseurs | Set pistone ammortizz. |
| VTR233005 | Rear Shock Shaft 1.2 | Vaterra Kolbenstange Hinten | Tige d'amortisseur 1,2 arrière | Albero 1,2 ammortizz. posteriore |
| VTR233006 | Front Shock Shaft 3.6 | Vaterra Kolbenstange Vorne | Tige d'amortisseur 3,6 avant | Albero 3,6 ammortizz. anteriore |
| VTR233007 | Rear Shock Body Set | Vaterra Dämpfergehäuseset h. | Jeu de corps d'amortisseurs arrière | Corpo ammortizzatori posteriori |
| VTR233008 | Rear Shock Spring Soft Yellow (2) | Vaterra Feder h. Gelb/Weich (2) | Ressorts pour amortisseurs arrière, Souples, jaune (2) | Molle posteriori morbide gialle (2) |
| VTR233012 | Front Shock Spring Medium Silver (2) | Vaterra Feder v. Silber/Mittel (2) | Ressorts pour amortisseurs avant, Moyens, argent (2) | Molle anteriori medie argento (2) |

FRONT SHOCK // VORDERER STOSSDÄMPFER // AMORTISSEUR AVANT // AMMORTIZZATORI ANTERIORI

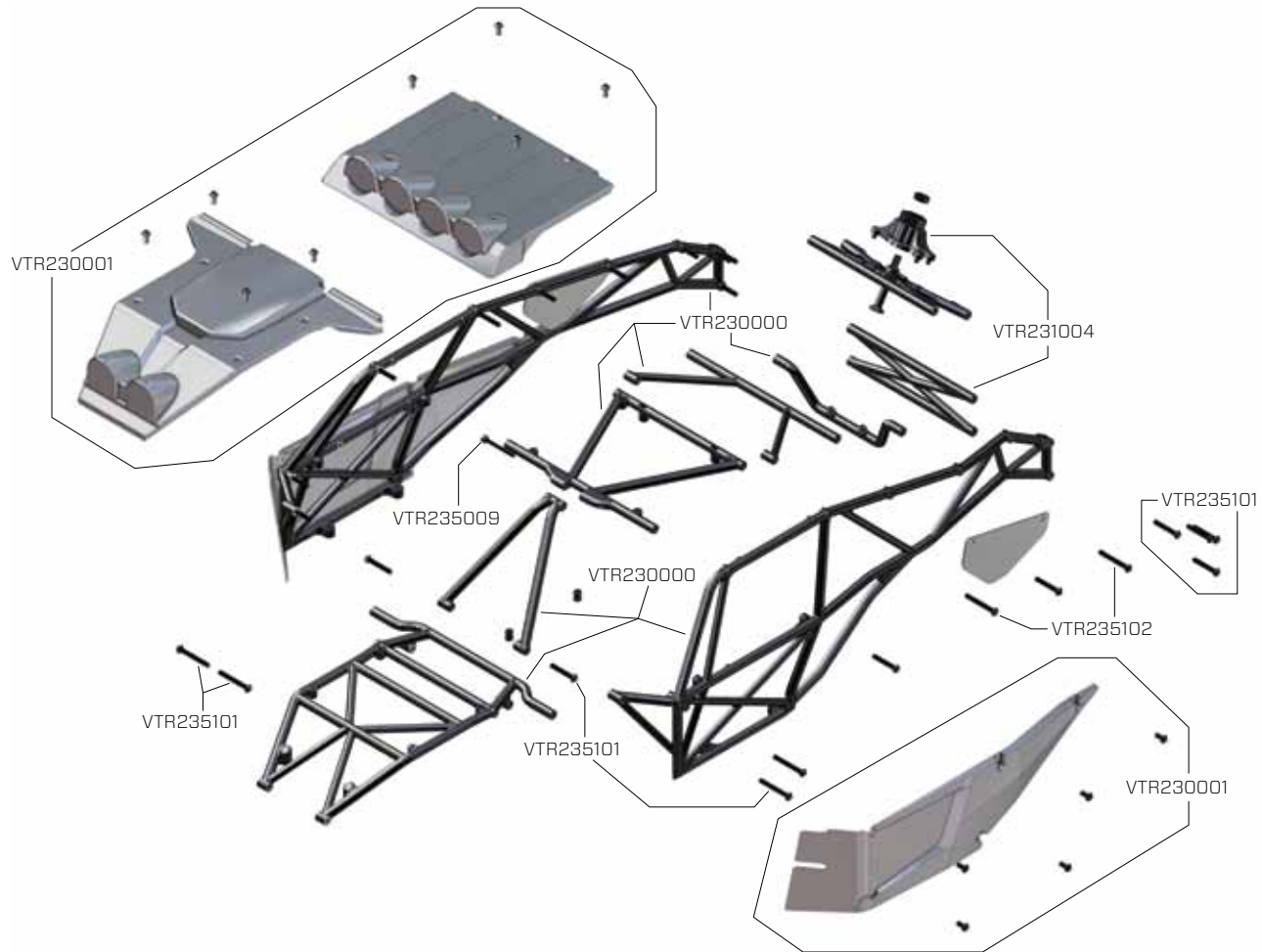


REAR SHOCK // HINTERER STOSSDÄMPFER // AMORTISSEUR ARRIÈRE // AMMORTIZZATORI POSTERIORI



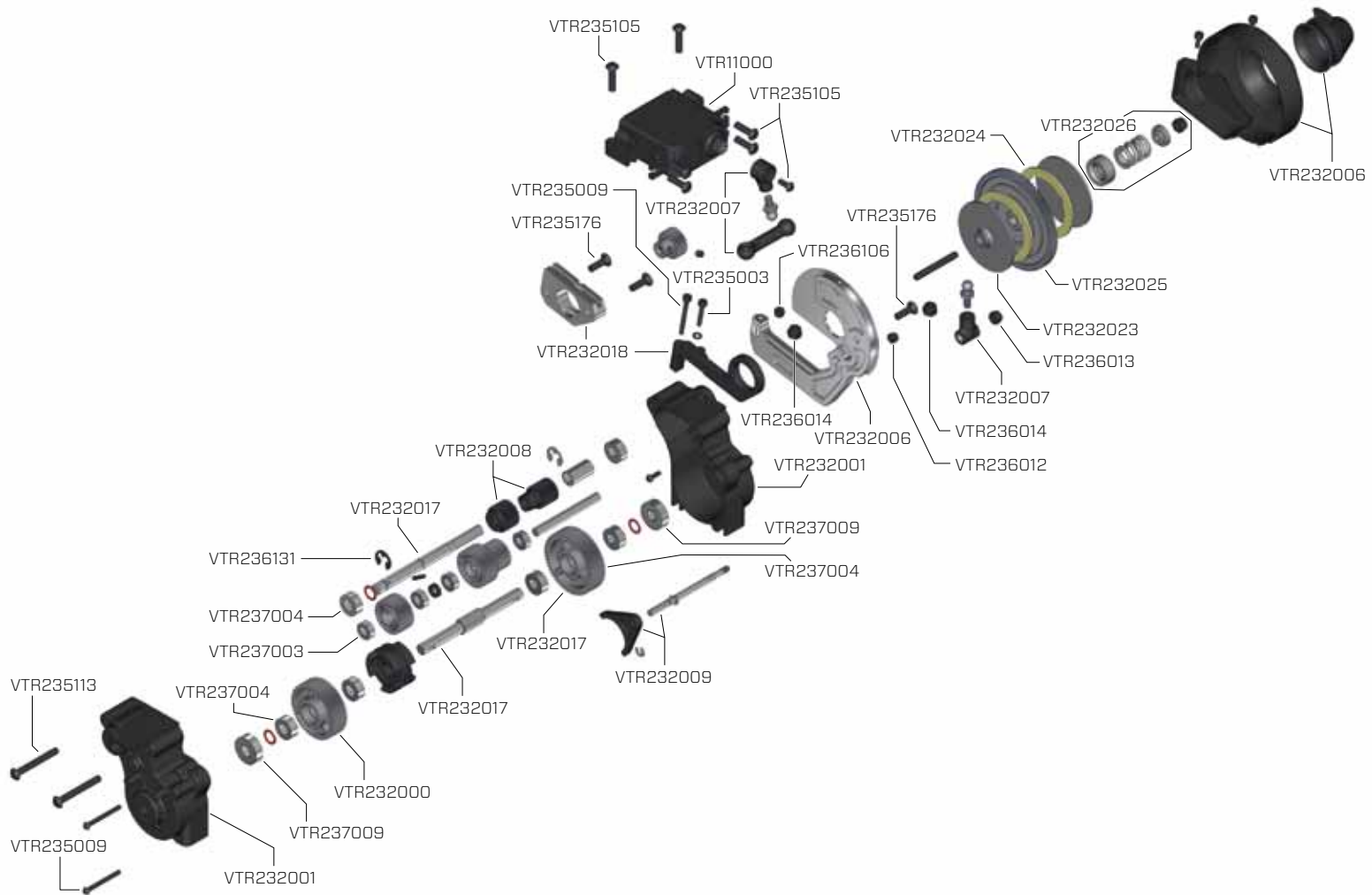
ROLLBAR ASSEMBLY // ÜBERROLLBÜGEL // ASSEMBLAGE DE L'ARCEAU // GRUPPO ROLLBAR //////////////////////////////////////

| Part # Nummer Numéro Codice | Description | Beschreibung | Description | Descrizione |
|--|---------------------------------|---|--|--|
| VTR230000 | Roll Cage Set | Vaterra Überrollkäfig | Arceau cage | Set roll-bar |
| VTR230001 | Body Panel Set | Vaterra Verkleidungs Set | Jeu de panneaux de carrosserie | Set carrozzeria |
| VTR231004 | Battery Tray & Spare Tire Mount | Vaterra Akkufach und Ersatzradhalter | Support de batterie avec support de roue de secours | Porta batteria e supporto ruota di scorta |



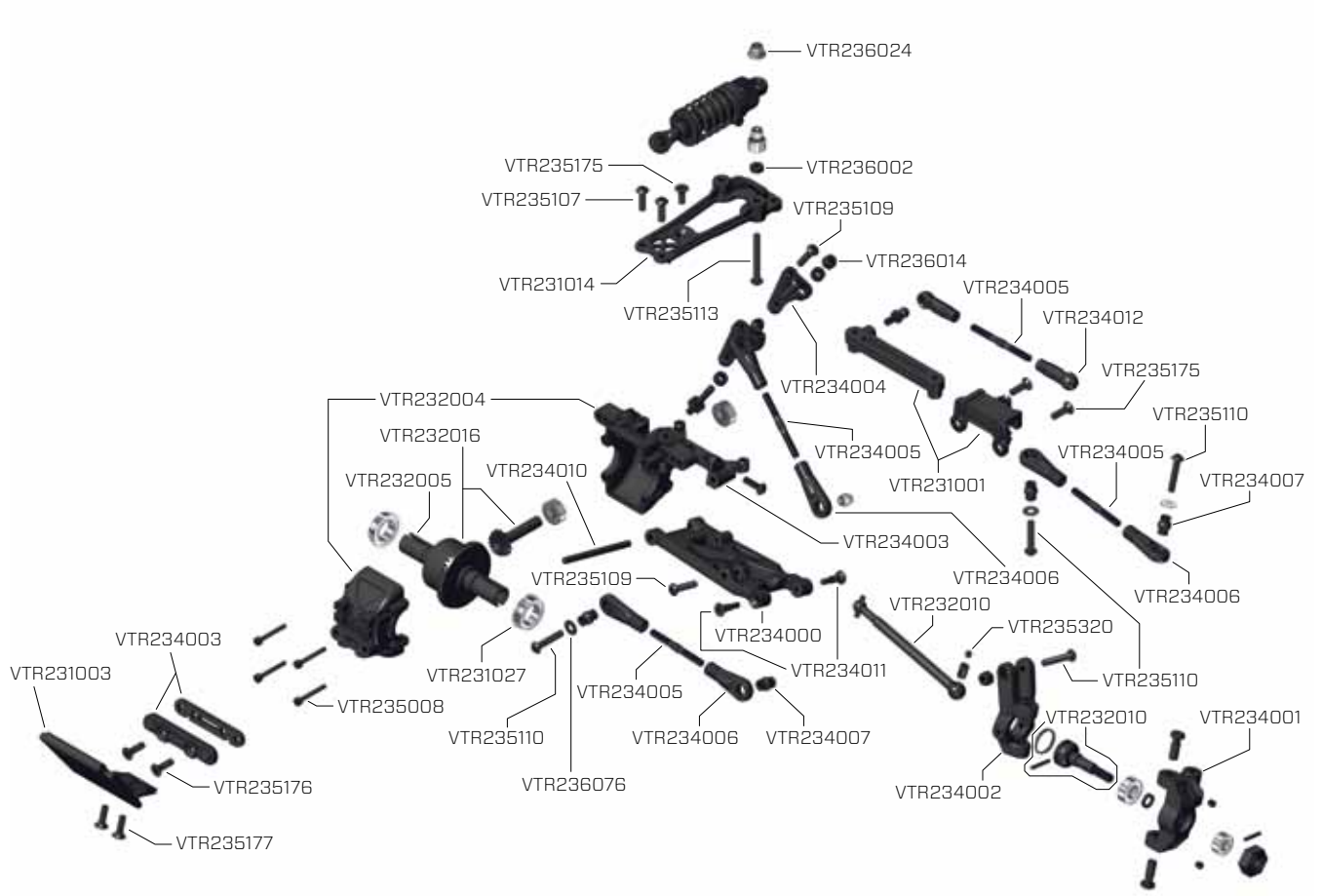
TRANSMISSION // GETRIEBE // TRANSMISSION // TRANSMISSIONE //////////////////////////////////////

| Part # Nummer Numéro Codice | Description | Beschreibung | Description | Descrizione |
|------------------------------------|---|--|---|---|
| VTR11000 | 903WP Digital Servo | Vaterra 903WP Digital Servo | Servo digital 903WP | 903WP servo digitale |
| VTR232000 | Transmission Molded Gear Set | Vaterra Getriebesatz | Set de pignons transmission moulés | Set ingranaggi trasmissione |
| VTR232001 | Transmission Case | Vaterra Getriebegehäuse | Boitier de transmission | Scatola trasmissione |
| VTR232006 | Motor Plate & Gear Cover | Vaterra Motormontageplatte/ Abdeckung | Support moteur avec protection de transmission | Piastra motore e copertura ingran. |
| VTR232007 | Transmission Shift Linkage Set | Vaterra Schaltgestänge Set | Tringlerie de changement de vitesse | Set collegamento trasmissione cambio |
| VTR232008 | High & Low Speed Gear Set | Vaterra Zwei-Gang-Getriebe Set | Set de pignons petite et grande vitesse | Set ingranaggi alta e bassa velocità |
| VTR232009 | Transmission Shift Fork & Shaft | Vaterra Schaltstangenset | Fourchette et axe de changement de vitesse | Forcella e albero trasmissione cambio |
| VTR232017 | Transmission Shaft Set | Vaterra Antriebswellenset | Set d'arbres de transmission | Set albero trasmissione |
| VTR232018 | Aluminum Motor Plate & Clamp | Vaterra Motorplatte und Klemmring Aluminium | Support moteur radial en aluminium | Piastra e morsetto motore in alluminio |
| VTR232023 | Slipper Back Plate | Vaterra Rückplatte für Slipper | Plateau de slipper | Piastra posteriore slipper |
| VTR232024 | Slipper Pads (2) | Vaterra Slipper Scheiben (2) | Garnitures de slipper (2) | Slipper Pads (2) |
| VTR232025 | 78 Tooth Spur Gear | Vaterra Hauptzahnrad 78T | Couronne 78T | Corona 78 denti |
| VTR232026 | Slipper Spring, Cup, Spacer & Washer | Vaterra Kupplungsfeder, Distanzstück u. Unterlegscheibe | Rondelle, entretoise, ressort et coupelle de slipper | Molla, coppa, distanziale e rondella slipper |



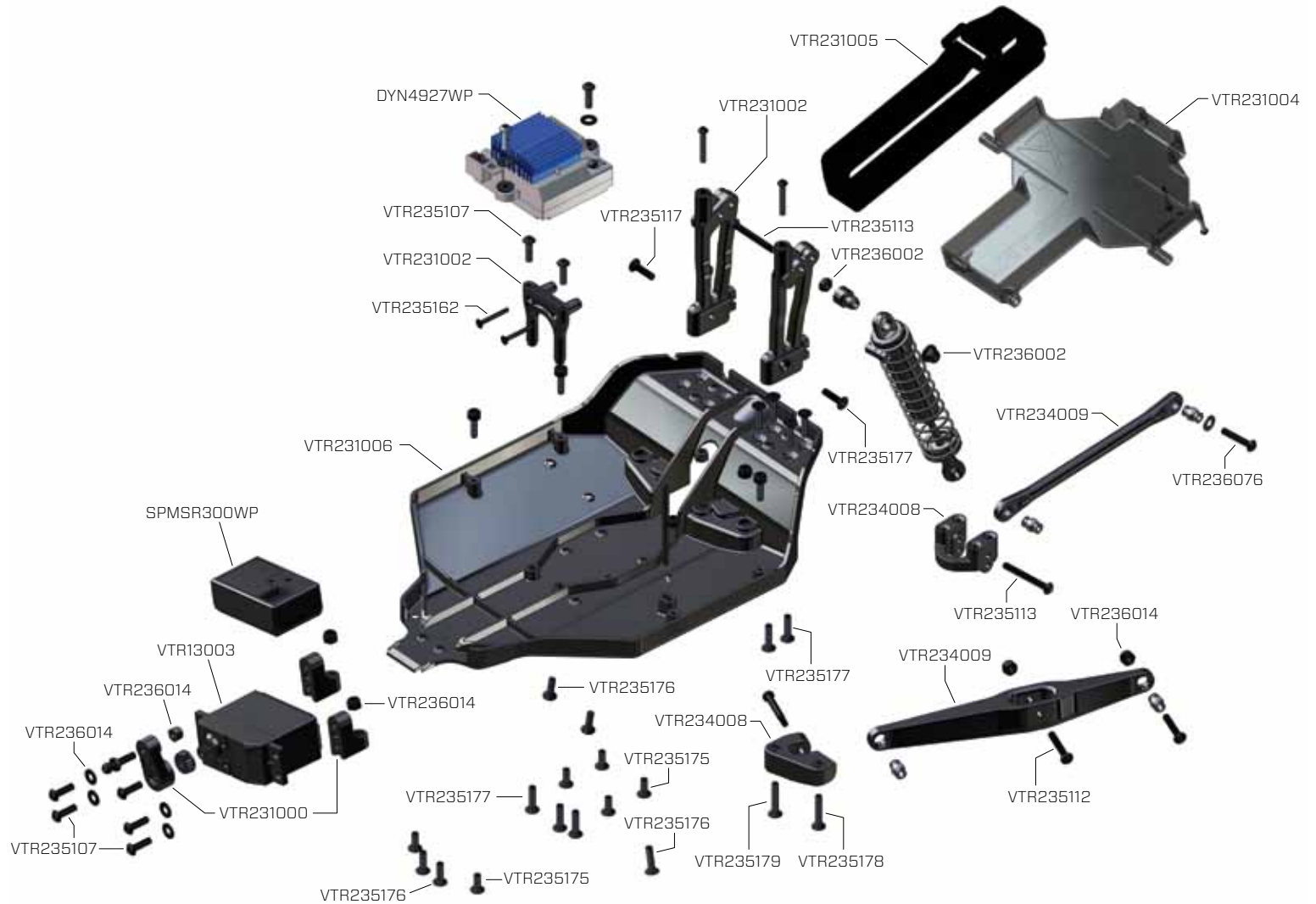
FRONT CLIP // FRONTCLIP // ASSEMBLAGE DU TRAIN AVANT // CLIP ANTERIORE //////////////////////////////////////

| Part # Nummer Numéro Codice | Description | Beschreibung | Description | Descrizione |
|------------------------------------|--------------------------------|---|---|---------------------------------------|
| VTR231001 | Steering Rack and Bar | Vaterra Ackermann Set | Set de guide et de barre de direction | Barre sterzo e cremagliera |
| VTR231003 | Front Bumper | Vaterra Stoßfänger Vorne | Pare choc avant | Paraurti anteriore |
| VTR231014 | Chassis Top Plate | Chassisabdeckung oben | Renfort avant supérieur de châssis | Coperchio superiore telaio |
| VTR232004 | Front Center Gearbox Housing | Vaterra Getriebegehäuse Vorne | Boitier de différentiel central avant | Sede riduttore centrale anter. |
| VTR232005 | Front Outdrives (2) | Vaterra Antriebsklauen Vorne (2) | Noix de cardan avant (2) | Trascinatori anteriori (2) |
| VTR232010 | Front CV Shaft Set | Vaterra CV Wellen Set Vorne | Set de cardans CVD avant | Set albero CV anteriore |
| VTR232016 | Fr/R Ring & Pinion Gear | Vaterra Tellerrad und Triebtrieb Vorne/Hinten | Couronne et pignon d'attaque de différentiel av/arr | Anello e pignone anter./poster. |
| VTR234000 | Front Suspension Arms | Vaterra Querlenker Vorne | Bras de suspension avant | Bracci sospensioni anter. |
| VTR234001 | Front Spindles | Vaterra Achsschenkel | Fusées avant | Alberini anter. |
| VTR234002 | Front 15 Deg. Caster Blocks | Vaterra 15 Grad Träger für Achsschenkel | Etriers portes fusées avant 15° | Blocchi anter. caster 15° |
| VTR234003 | Front Hinge Pin Brace and Cap | Vaterra Querlenkerhalter Vorne inkl. Kappen | Renfort de cellule avant avec protection | Supporto perno cerniera e tappo |
| VTR234004 | Front Rocker Arm Set | Vaterra Schwingenset | Set de basculeurs avant | Set braccio bilanciante anter. |
| VTR234005 | Front Tie Rod Set | Vaterra Aufhängungsset | Set de tirants avant | Set stelo e fascetta anter. |
| VTR234006 | Front Captured Rod End 6mm (6) | Vaterra Kugelpfannen Vorne 6mm (6) | Chapes rotules fermées avant 6mm (6) | Terminale asta anter. 6mm (6) |
| VTR234007 | Pushrod Pivot Balls & Pins | Vaterra Kugelkopf und Stifte | Goupilles et articulations de tringleries | Cardine, sfere e perni astine comandi |
| VTR234010 | Front Inner Hinge Pin (2) | Vaterra Querlenkerstift Vorne/Innen (2) | Axes de suspension avant intérieurs (2) | Perno cerniera interiore anter. (2) |
| VTR234012 | Ball Cup Ends | Vaterra Kugelpfannen | Chapes rotules | Attacchi a sfera |



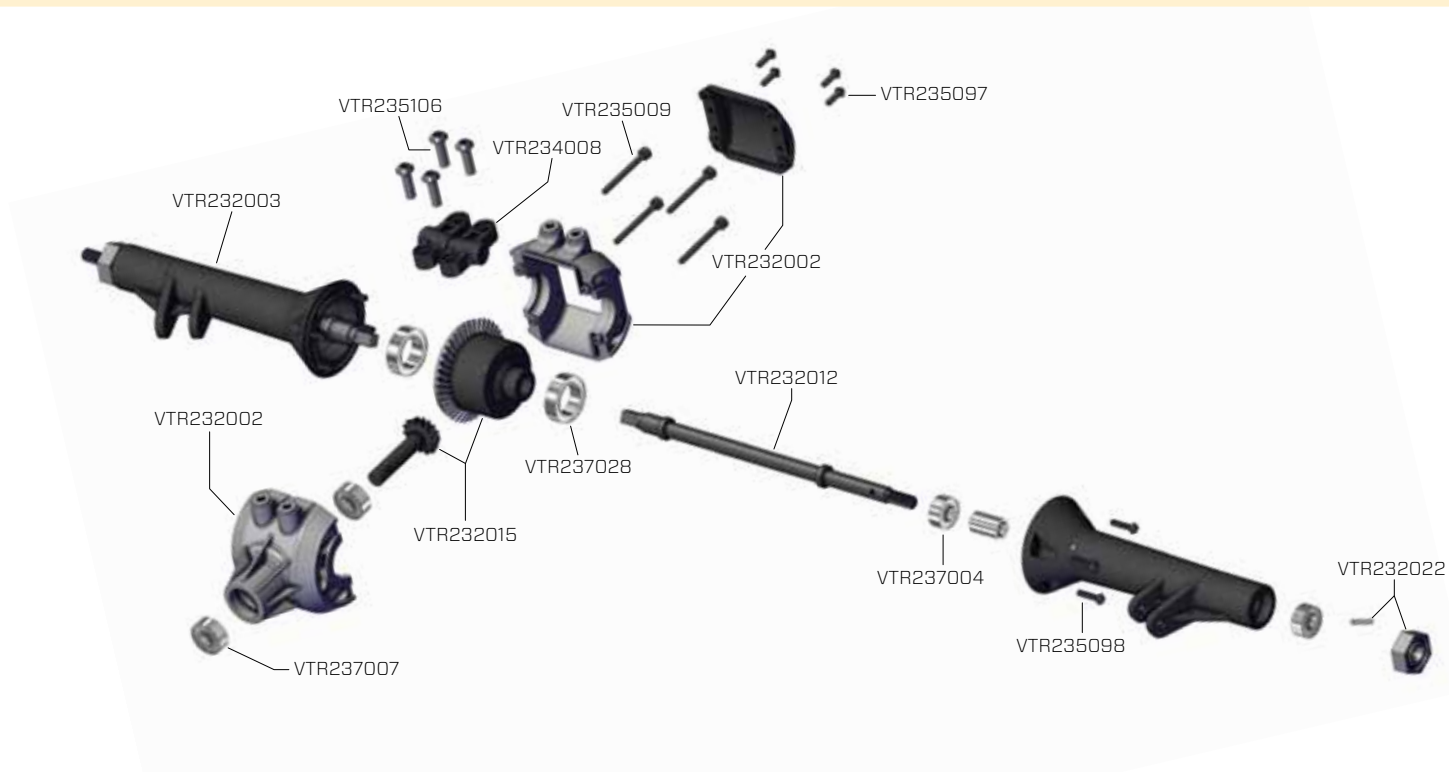
CHASSIS // CHASSIS // CHÂSSIS // TELAIO //////////////////////////////////////

| Part # Nummer Numéro Codice | Description | Beschreibung | Description | Descrizione |
|------------------------------------|--------------------------------------|---|---|--|
| DYN4927WP | Li-Po Tazer 12T Waterproof ESC | Li-Po Tazer 12T Waterproof ESC | Variateur Tazer 12T Li-Po étanche | ESC Li-Po Tazer 12T Impermeabile |
| SPMSR300WP | Waterproof Surface Receiver | Waterproof Surface Receiver | Récepteur étanche | Ricevitore impermeabile |
| VTR13003 | 625WP Metal Gear Servo WP | Vaterra 903WP Digital Servo | Servo 625WP à pignons métal | 625WP Servo ingran. metallo |
| VTR231000 | Servo Arm and Mount Set | Vaterra Servoarm und Montage Set | Jeu de support et de bras de servo | Set supporti e squadrette servi |
| VTR231002 | Rear Shock Towers & Fr Upright Brace | Vaterra Dämpferbrücken Hinten | Renforts de supports d'amortisseurs av/arr | Torri ammortizz. poster. e sostegno anter. superiore |
| VTR231004 | Battery Tray & Spare Tire Mount | Vaterra Akkufach und Ersatzradhalter | Support de batterie avec support de roue de secours | Porta batteria e supporto ruota di scorta |
| VTR231005 | Battery Strap | Vaterra Klettverschluss | Sangle de batterie | Fascette batteria |
| VTR231006 | Chassis | Chassis | Châssis | Telaio |
| VTR234008 | Rear Suspension Track Rod Mounts | Vaterra Monatsatz für Aufhängung hinten | Supports de tirants arrière de suspension | Supporto asta sospensione poster. |
| VTR234009 | Rear Upper & Lower Track Rods | Vaterra Aufhängungssatz Oben/Unten | Tirants supérieurs et inférieurs arrière | Aste superiore & inferiore poster. |



REAR AXLE // HINTEN ACHSEN // AXES ARRIÈRE // ASSE POSTERIORE //////////////////////////////////////

| Part # Nummer Numéro Codice | Description | Beschreibung | Description | Descrizione |
|------------------------------------|--------------------------------------|---|---|--|
| VTR232002 | Rear Center Diff Housing | Vaterra Diffgehäuse Hinten | Boitier de différentiel central arrière | Sede diff. centrale poster. |
| VTR232003 | Rear Axle Tubes | Vaterra Steckachsen für Getriebe | Tubes d'axes de roues arrière | Tubi asse posteriore |
| VTR232012 | Rear Axle Shafts (2) | Vaterra Radachsen Hinten (2) | Axes de roues arrière (2) | Alberi asse posteriore (2) |
| VTR232015 | Fr/R Diff Housing | Vaterra Diffgehäuse Vorne/Hinten | Carter de différentiel av/arr | Sede diff. anter./poster |
| VTR232022 | 12mm Molded Hex Pins & Lock Nuts (4) | Vaterra Mitnehmerstift konisch mit Stopmutter | Ecrous frein et goupilles pour hexagone moulés 12mm (4) | Perni esagonali stampati 12mm e dadi autobloccanti (4) |
| VTR234008 | Rear Suspension Track Rod Mounts | Vaterra Monatsatz für Aufhängung hinten | Supports de tirants arrière de suspension | Supporto asta sospensione poster. |



OPTIONAL PARTS // OPTIONALE BAUTEILE // PIÈCES OPTIONNELLES // PEZZI OPZIONALI // // // // //

| Part # Nummer Numéro Codice | Description | Beschreibung | Description | Descrizione |
|------------------------------------|---------------------------------------|---|--|--------------------------------------|
| VTR331000 | Steering Servo Mount Set, Alum. | Vaterra Lenkservobefestigung Aluminium | Support de servo de direction en aluminium | Set supporto allum. per servo sterzo |
| VTR332001 | Aluminum Transmission Shaft Set | Vaterra Antriebswelle Aluminium | Set d'arbres de transmission en aluminium | Set albero alluminio trasmissione |
| VTR332000 | Locker, Front Diff | Vaterra Diffsperr Vorne | Cale de verrouillage de différentiel avant | Bloccaggio differenziale anter. |
| VTR334000 | Sway Bar Kit Front | Vaterra Stabisatz Vorne | Kit de barre anti-roulis avant | Kit barra oscillante anter. |
| VTR3340001 | Sway Bar Kit Rear | Vaterra Stabisatz Hinten | Kit de barre anti-roulis arrière | Kit barra oscillante poster. |
| VTR334002 | Rocker Arm Set Aluminum | Vaterra Schwingenset Aluminium | Set de basculeurs en aluminium | Set bilanciere alluminio |
| VTR334003 | Front Spindles Aluminum | Vaterra Achsschenkel Aluminium | Fusées avant en aluminium | Alberini anter. alluminio |
| VTR334004 | Front 15 Deg. Caster Black Set, Alum. | Vaterra Achsschenkelträger 15Grad Aluminium | Jeu d'étriers porte fusées en aluminium, 15° | Set nero caster 15° anter. alluminio |
| VTR233009 | Rear Shock Spring Medium Silver (2) | Vaterra Feder h. Silber/Mittel (2) | Ressorts pour amortisseurs arrière, Moyens, argent (2) | Molle posteriori medie argento (2) |
| VTR233010 | Rear Shock Spring Firm Green (2) | Vaterra Feder h. Hart/Grün (2) | Ressorts pour amortisseurs arrière, Durs, vert (2) | Molle posteriori dure verdi (2) |
| VTR233011 | Front Shock Spring Soft Yellow (2) | Vaterra Feder v. Gelb/Weich (2) | Ressorts pour amortisseurs avant, Souples, jaunes (2) | Molle anteriori morbide gialle (2) |
| VTR233013 | Front Shock Spring Firm Green (2) | Vaterra Feder v. Hart/Grün (2) | Ressorts pour amortisseurs avant, Durs, vert (2) | Molle anteriori dure verdi (2) |



VATERRA™

It is a shared passion for motorsports and radio control. Extreme performance and extreme places. Cars and trucks that look and drive just like the real thing. Most of all, it is about gathering friends, grabbing a vehicle and having the time of your life.

Adventure Driven.™